



Smart Mixer Manager

For DIGITAL SMARTMIXER

User Manual

English

Smart Mixer Manager

What is Smart Mixer Manager?

Smart Mixer Manager is a software application for configuring settings for ATDM series Audio-Technica Digital SmartMixers (ATDM-1012 and ATDM-1012DAN). The software application can also be used to create projects and configure device settings and parameter settings while offline. After the settings have been configured offline, the offline setting data can be transferred to a mixer by connecting a LAN cable. Once the setting data is transferred, the software application can be used for real-time editing of ATDM series mixer parameters. Data from ATDM series mixers connected via LAN cable can also be imported into Smart Mixer Manager.

- Be sure to also read the user manual for the product when using this software application.

Supported models & recommended environments

Smart Mixer Manager is designed for use with computers. It cannot be used with tablets or smartphones.

| Item | Environment |
|--------------------------------|---------------------------|
| Supported models | ATDM-1012 ATDM-1012DAN |
| Supported OS | Microsoft Windows 10 |
| Recommended display resolution | 1280 × 720 or higher |

Installing Smart Mixer Manager

- 1 Download Smart Mixer Manager to your computer.**
 - The installer can be downloaded from the Audio-Technica website (<https://www.audio-technica.com/>) for the country or region where used.
- 2 Double-click the downloaded "SmartMixerManager-X.X.X-Setup.exe".**
- 3 Follow the instructions displayed on the setup wizard to install Smart Mixer Manager.**

Examples of product uses

Offline environment

Create a new project in an offline environment, configure the device settings and parameters, and then save the project data to your computer. In an online environment, transfer and synchronize the created data to a connected mixer. The benefit of using this method is that settings configured using Web Remote can be pre-configured in an offline environment.

Online environment

Connect to and synchronize a mixer in an online environment to quickly edit mixer parameters in real-time.

Connecting Smart Mixer Manager to mixers

Connecting to a mixer

- 1 Set the computer to automatically obtain IP address settings.**
- 2 Connect the mixer and the computer on which Smart Mixer Manager is installed to the same network.**
 - The mixer ships from the factory with "IP Config Mode" set to "Auto".
- 3 Launch Smart Mixer Manager.**



- Depending on the operating system and security software being used, confirmation screens requesting communication authorization may be displayed during setup. When these appear, authorize the communication.
- To connect using a static IP address, set "IP Config Mode" to "Static".

If you cannot connect to the mixer

If you cannot connect to the mixer, check the following:

- Smart Mixer Manager might not work properly due to the firewall or security software firewall of the computer being used. In this case, check the firewall settings and authorize communication with Smart Mixer Manager.
- Smart Mixer Manager uses IP multicast. Make sure that your multicast IP address/port number is not blocked in your network environment.
- To maintain a stable connection, we recommend not connecting to multiple networks. For example, if the mixer is connected with a wired LAN, disable the Wi-Fi connection. If multiple networks are connected, the mixer may not be detected or the connection may be lost.

About firewall settings

- 1 Click "Windows Security" from Start menu.**
- 2 Click "Firewall & network protection".**
- 3 Click "Allow an app through firewall".**
- 4 Confirm that check marks have been entered for all domain, private, and public items in Smart Mixer Manager.**
 - If check marks have not been entered, apply check marks for all items.

Connecting Smart Mixer Manager to mixers

5 Click "OK".



- If Smart Mixer Manager is not listed, click "Allow another app" to add Smart Mixer Manager. If it does not appear on the list, you need to specify a location. Specify a file in the following location:
C:\Program Files\Audio-Technical\Smart Mixer Manager
File name: SmartMixerManager.exe

Launching Smart Mixer Manager

1 Launch Smart Mixer Manager installed to your computer.

» The top menu screen appears.

Actions possible using the top menu screen

New Project

Create a new project.

Open Project

Edit a project by opening a project file saved to your computer.

Connect Online Device

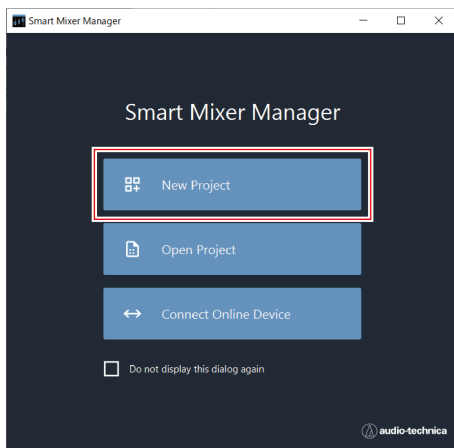
Connect a mixer on the same network.



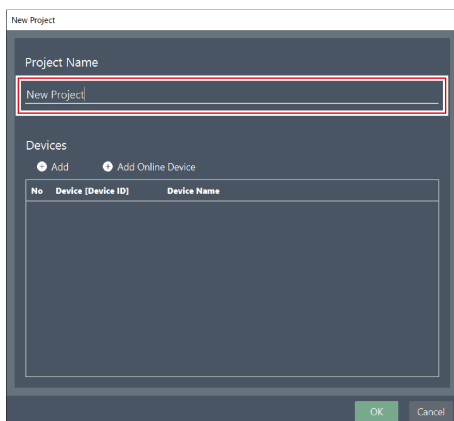
- If “Do not display this dialog again” is turned on by entering a check in the box, the “New Project” screen will appear the next time the application is launched without the top menu screen being shown. Settings can also be changed using “Page Settings” under software application settings.

Creating new projects

- 1 Click "New Project" on the top menu screen.



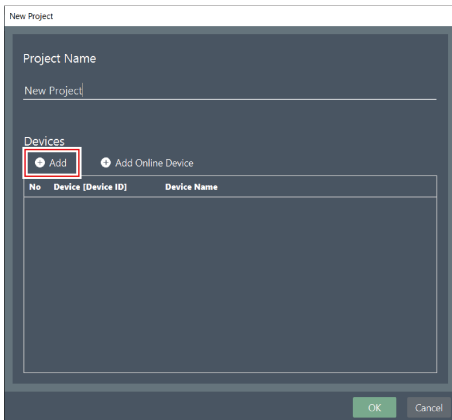
- 2 Enter a project name.



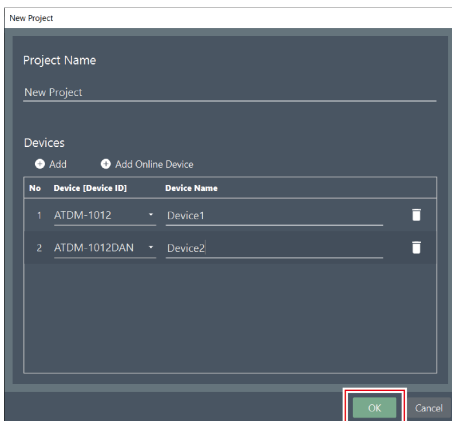
- 3 Click "Add" to add a mixer.

- To add a physical mixer in an online environment, click "Add Online Device" and select the mixer.

Creating new projects

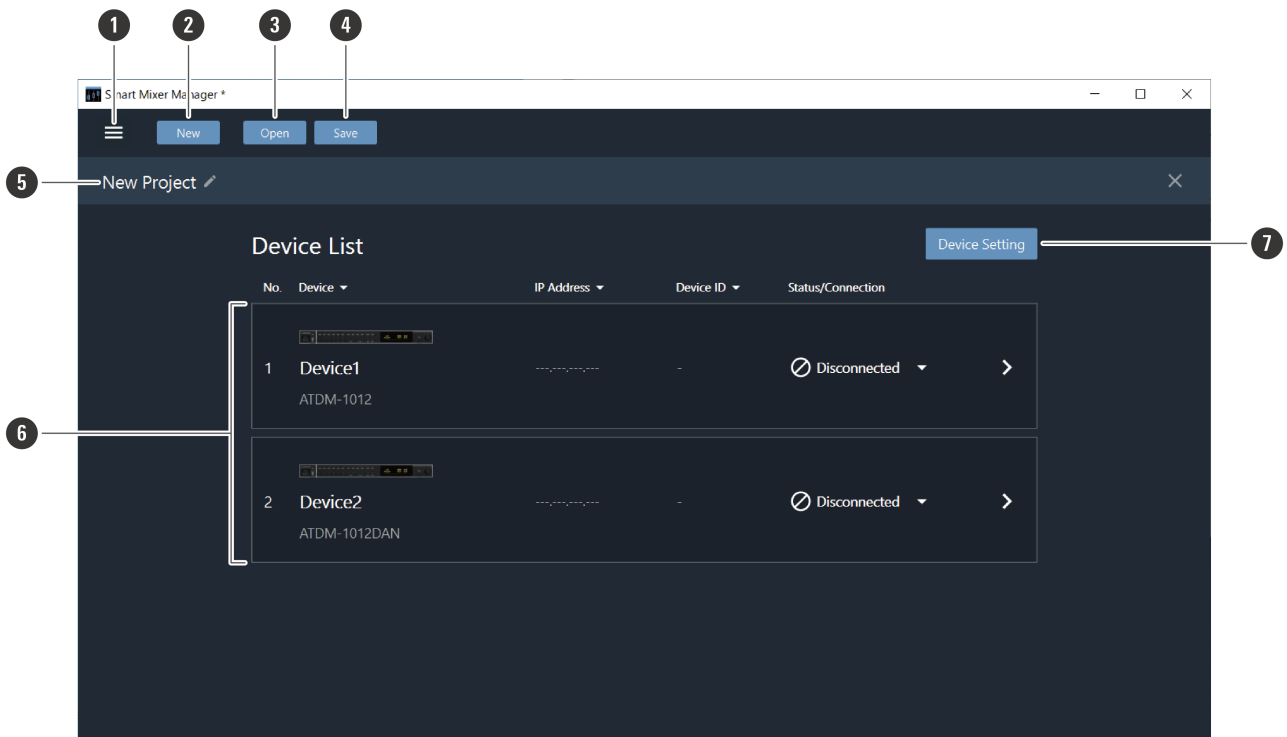


4 Click "OK".



» The screen for creating a new project opens.

Overview of the project screen



1 Main menu

Click to select the system menu.

2 New

Create a new project.

3 Open

Open a saved project.

4 Save

Save the project file.

5 Project name

Displays the project name. Click the icon to edit the project information.

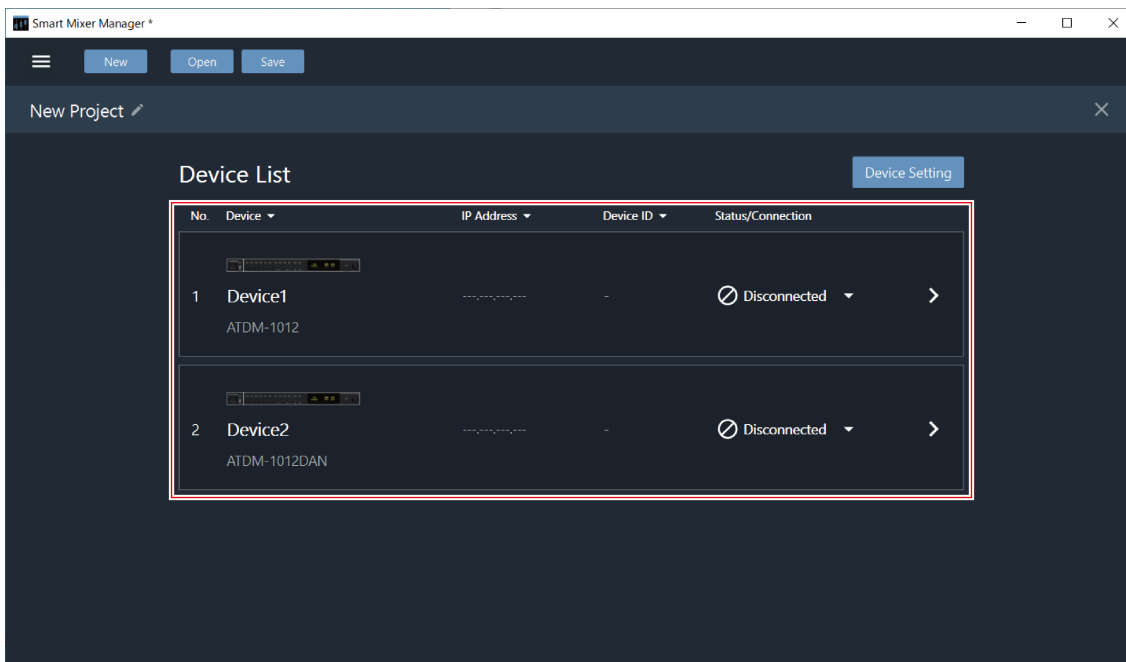
6 Device List

Lists the mixers being managed by the project.

7 Device Setting

Click to add/remove mixers to/from management by the project.

Overview of the device list



No.

Indicates the order of devices in the list.

Device

Indicates the name of the mixer.

IP Address

Displays the IP address. "-" is displayed if the device is not connected to a network.

Device ID

Displays the device ID.

Status/Connection

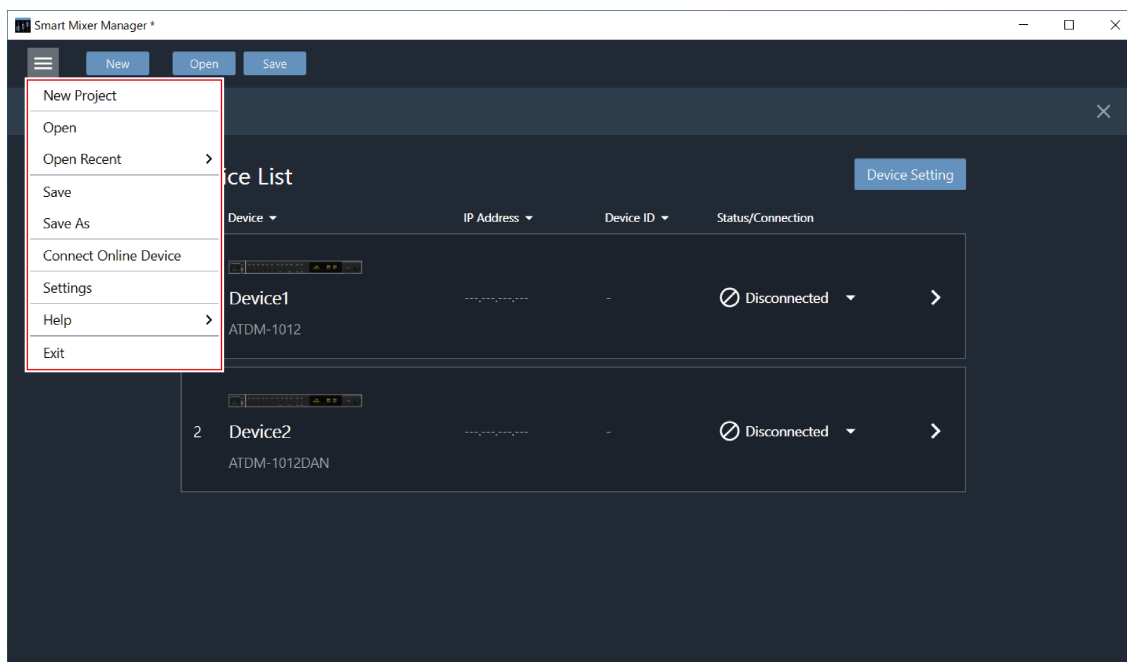
Displays the mixer connection status.

Connected: A connection was established normally.

Disconnected: Not connected to the mixer.

Missing: A previously connected mixer has been disconnected.

Actions possible using the main menu



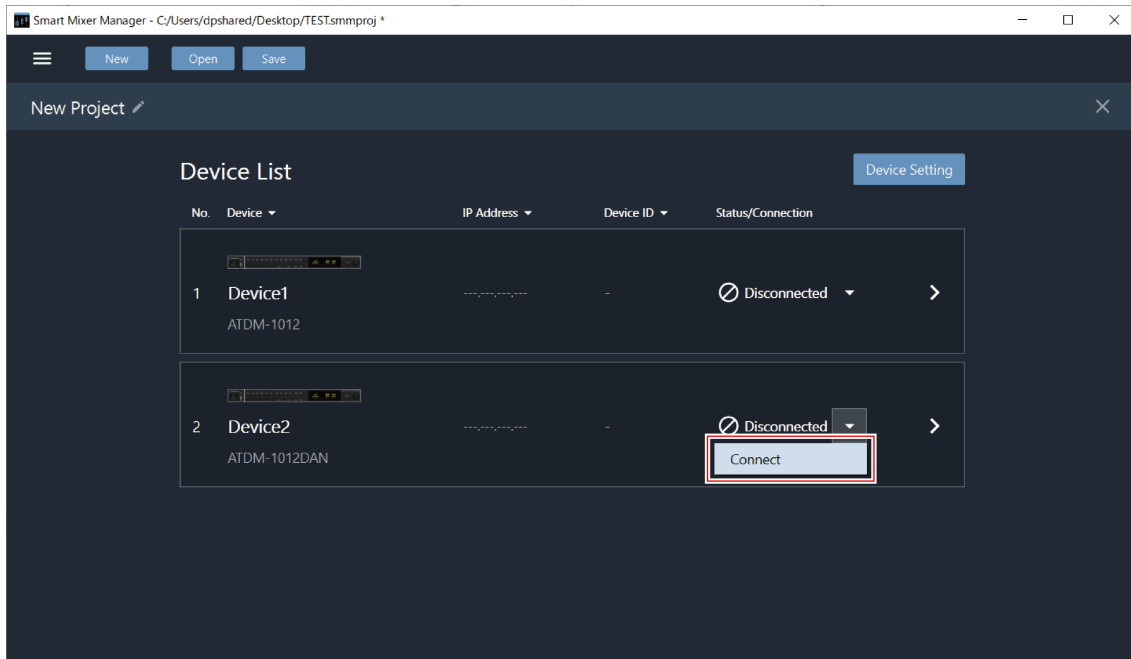
| Main menu | Description |
|-----------------------|--|
| New Project | Create a new project. |
| Open | Open project files saved to your computer. |
| Open Recent | Open recently opened project files. |
| Save | Save a project file by overwriting. |
| Save As | Name and save a project file. |
| Connect Online Device | Connect a mixer on the same network. |
| Settings | Configure software application settings. For details, see "Software application settings." |
| Help | Clicking "Help" in the submenu will display Smart Mixer Manager online help portal. Clicking "About" will display software application information, such as the version. |
| Exit | Exit Smart Mixer Manager. |

Synchronizing a mixer

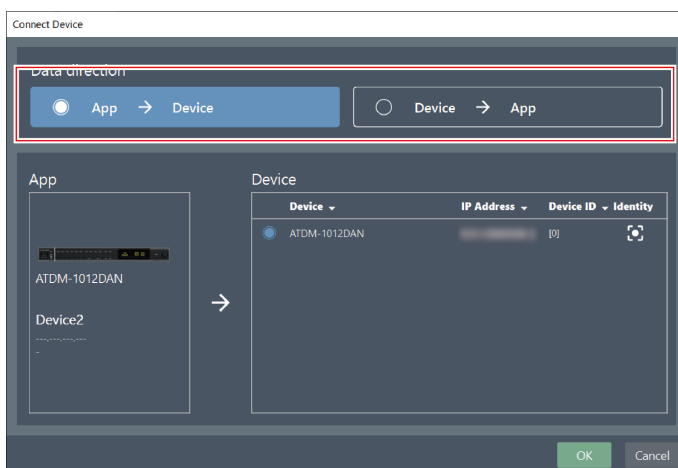
Synchronizing from the device list

Use this method to synchronize a mixer from a device list created offline beforehand.

- 1 Click the area in the red box on the device list, and click “Connect” in the pull-down menu.



- 2 Under “Data direction”, select the settings data to be reflected.

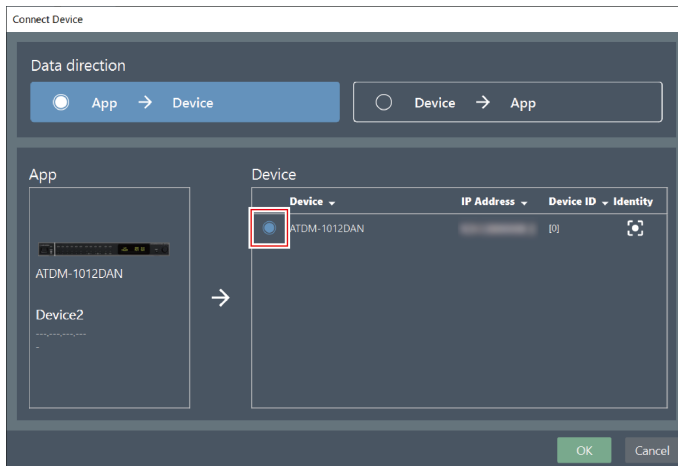


| Item | Description |
|---------------|--|
| App -> Device | Push software application settings to the mixer. |
| Device -> App | Push mixer settings to the software application project. |

Synchronizing a mixer

3 Under "Device", select the mixer to be connected.

- Only mixers on the same network are shown under "Device".
- Click "Identify" to confirm the mixer being connected to.



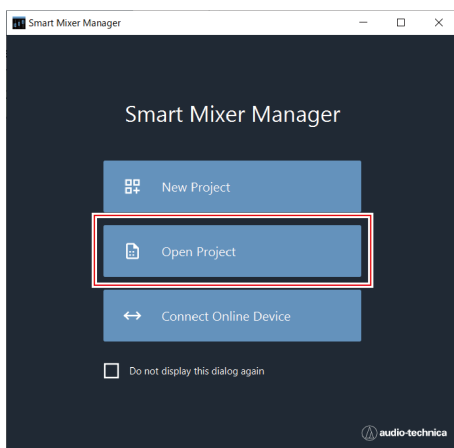
4 Click "OK".

- Synchronization may take some time.
- » Once connected with the mixer, the mixer connection status switches to "Connected".

Synchronizing from the top menu screen

Use this method to immediately synchronize with an online mixer after launching Smart Mixer Manager.

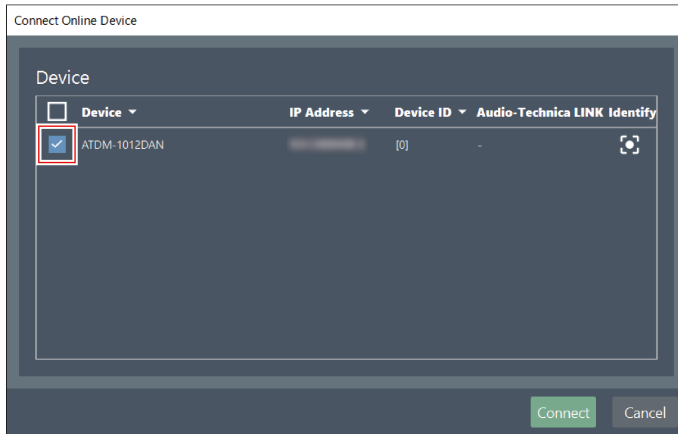
1 Click "Connect Online Device" on the top menu screen.



2 Select mixers to be added by clicking the corresponding check boxes.

Synchronizing a mixer

- Only mixers on the same network are shown under “Device”.
- Click “Identify” to confirm the mixer being connected to.

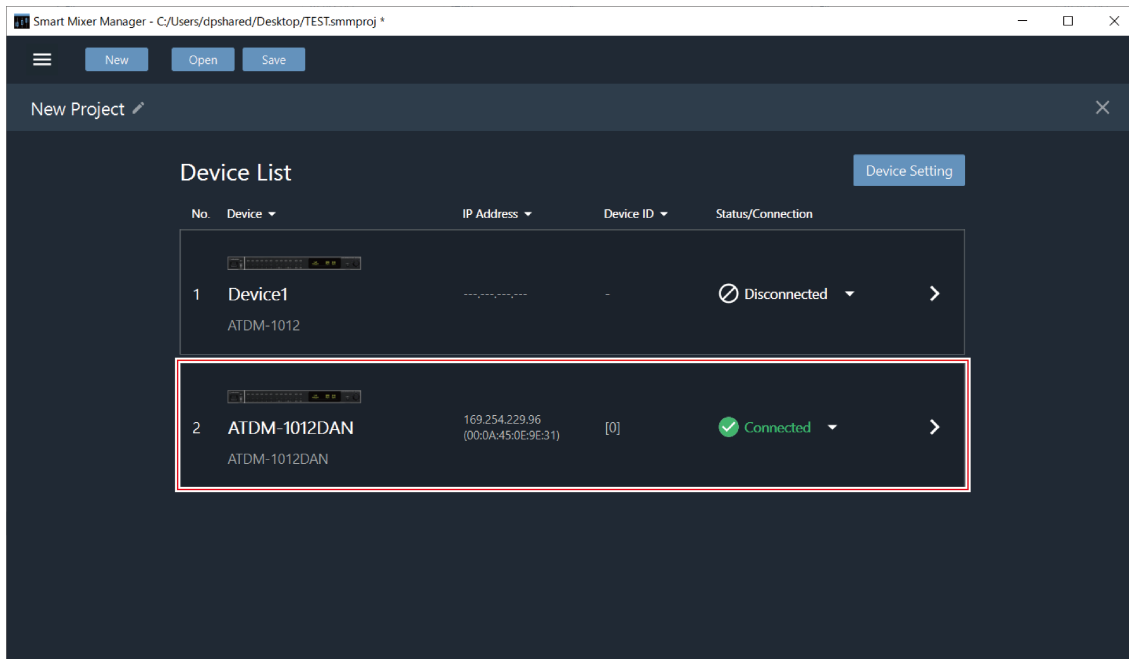


3 Click “Connect”.

- Synchronization may take some time.
- » **Once connected with the mixer, the mixer connection status switches to “Connected”.**

Editing parameters

- 1 Click the mixer in the Device List screen.

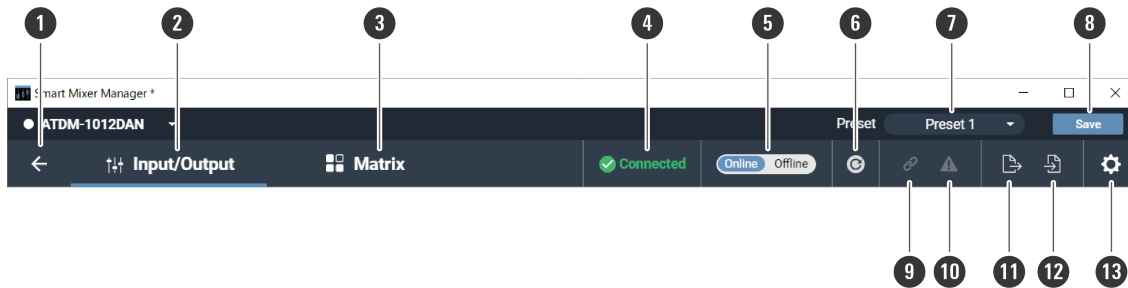


- 2 Edit the parameters in the same way as the Web Remote for the mixer.



Overview of the parameter editing screen

Header



1 Back button

Return to the device list.

2 Input/Output

Display the audio input/output screen.

3 Matrix

Display the matrix assignment settings screen.

4 Mixer connection status

Displays the mixer connection status.

Connected: A connection was established normally.

Disconnected: Not connected to the mixer.

Missing: A connection error occurred.

5 Online/Offline switch

Click to temporarily take the connection for an online mixer offline. Click again to switch back online. Select the settings data to be reflected and click "OK".

6 Refresh button

Refresh the mixer information.

7 Presets

Displays the preset selection and name of the imported preset(s).

8 Save

Overwrite the file with the project data being edited.

9 Audio-Technica LINK status

Displays the Audio-Technica LINK connection status.

10 Error status

Displays the error status.

11 File export button

Export mixer files.

12 File import button





Import mixer files.

13 Settings & Maintenance



Display the Settings & Maintenance screen to configure advanced system settings.

Overview of the parameter editing screen

Audio-Technica LINK status

| Icon display | Description |
|---|---|
|  | The Audio-Technica LINK mixer is not connected correctly. |
|  | The Audio-Technica LINK mixer is connected correctly. |
|  | There is an Audio-Technica LINK error. Clicking the triangle mark below the icon displays a description of the error. After checking the description of the error, move the cursor away from the icon, and the triangle mark will disappear. |
|  | There is an Audio-Technica LINK error. Clicking the triangle mark below the icon displays a description of the error. After checking the description of the error, move the cursor away from the icon, and the triangle mark will disappear. |

Error status

| Item | Description |
|---|---|
|  | No error is present. |
|  | An error is present. Clicking the triangle mark below the icon displays a description of the error. After checking the description of the error, move the cursor away from the icon, and the triangle mark will disappear. |

Actions possible using the audio input screen (Input)

Set the various options, such as Gain, Level, EQ, and SmartMixer, for audio input from a microphone or other audio devices.

Overview of the parameter editing screen



1 Input View Setting

Set the channel to display on the screen.

2 Smart Mix

Display the SmartMixer settings screen.

3 AEC/NC

Display the AEC (Acoustic Echo Canceler)/NC (Noise Canceling) settings screen.

4 Ducking

Display the ducking function settings screen.

5 CMP/FBS

Display the CMP (compressor)/FBS (feedback suppressor) settings screen.

6 Channel menu list

Copy channels, reset settings, and link channels.

7 Advanced channel settings

Display advanced channel settings.

8 Input type switching

Specify the input type (Mic/Line).

9 Gain adjustment meter

Set the input gain for Mic input.

10 Bus assignment display

Displays the assigned bus for each channel.

Overview of the parameter editing screen

11 Channel name/color

Set the channel name and color.

12 Mute

Switch the mute setting between ON and OFF.

13 Input level adjustment

Adjust the audio input level.

14 Min Volume ON/OFF

Set the lower limit of the audio input level. The volume position when the setting is turned ON (blue) will be set.

15 Max Volume ON/OFF

Set the upper limit of the audio input level. The volume position when the setting is turned ON (blue) will be set.

Configuring advanced channel settings (Input)

Setting channel names and colors

Set names and colors for each channel.

1 Click on the channel name.



2 Click on the text box and enter a channel name.

3 Select a color.

4 Click "OK".

» The channel name and color are set.

Overview of the parameter editing screen

Changing the input type

Specify the input type.

- 1 Click the area in the red box on the screen.



- 2 Select the input type from the pull-down menu.

Adjusting the gain

Adjust the input gain of the audio input.

- 1 Adjust the gain by dragging (vertical direction) the meter.

- Because the level meter will turn blue and display the pre-fader level when the gain is adjusted, adjust while monitoring that level.



- Gain values can also be entered by clicking on the number below the meter.

Overview of the parameter editing screen

Turning the phantom power ON/OFF

Turn ON/OFF the phantom power (+48V). This setting can be made only when “Mic” is selected as the input type.

1 Click the area in the red box on the screen.

- With each click, the setting switches between ON (blue) and OFF (no color).

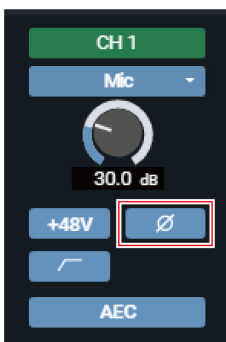


Turning the phase ON/OFF

Invert the input audio phase.

1 Click the area in the red box on the screen.

- With each click, the setting switches between ON (blue) and OFF (no color).



Turning the low-cut ON/OFF

Specify whether or not to remove low frequencies from the audio signal.

Overview of the parameter editing screen

1 Click the area in the red box on the screen.

- With each click, the setting switches between ON (blue) and OFF (no color).



Turning the AEC ON/OFF

Turn the AEC (Acoustic Echo Canceler) ON/OFF.

1 Click the area in the red box on the screen.

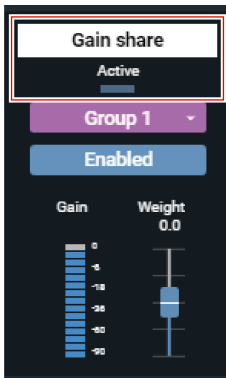
- With each click, the setting switches between ON (blue) and OFF (no color).



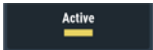


Checking SmartMixer status

1 Check the area in the red box on the screen.

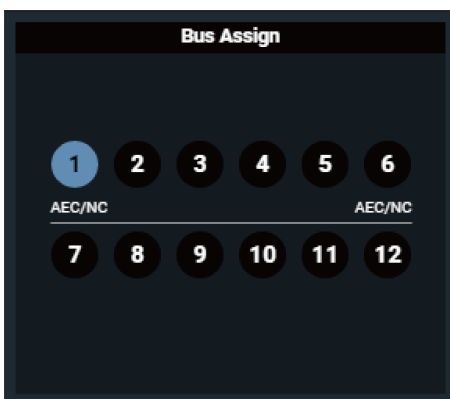
Overview of the parameter editing screen



| Display | Status |
|--|--|
|  | Turned OFF. |
|  | Turned ON. |
|  | Turned ON, and SmartMixer active. The set group color will be displayed. |

Checking the bus assignment

- 1 Displays the assigned bus for each channel.



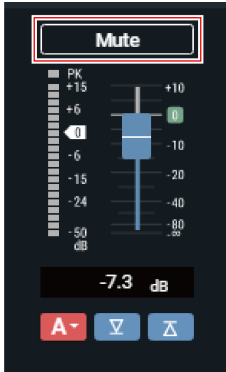
Turning the mute ON/OFF

Switch the mute setting between ON and OFF for each channel.

Overview of the parameter editing screen

1 Click the area in the red box on the screen.

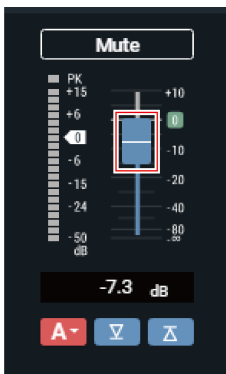
- Mute turns ON (red)/OFF (no color) each time the switch is clicked.






Adjusting the input level

Adjust the audio input level for the channel.

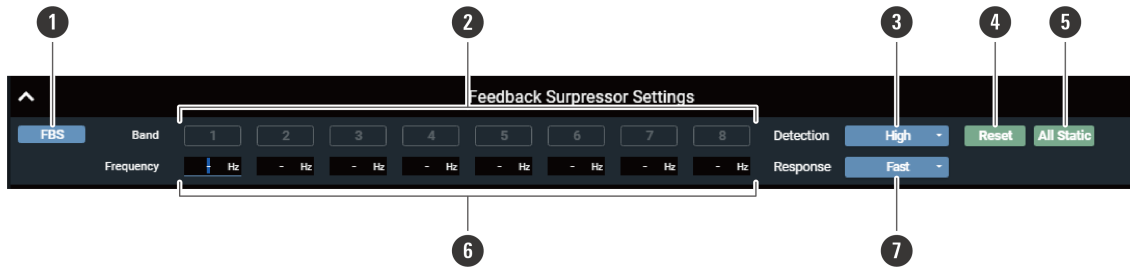
1 Drag the volume adjustment dial, and move it up and down to adjust the input level.



| Display | Status |
|---|---|
|  | If the channel faders are set to the same group on this screen on the primary and extension devices, and the faders are assigned under "Operator Page" > "Fader Settings" on the primary device, the fader assigned for the primary device will be used for controlling the levels of all channels in the same group. |
|  | Set the lower limit of the audio input level. The volume position when the setting is turned ON (blue) will be set. |
|  | Set the upper limit of the audio input level. The volume position when the setting is turned ON (blue) will be set. |

Overview of the parameter editing screen

Setting the FBS (feedback suppressor)






1 FBS ON/OFF

Switch the FBS ON (blue)/OFF (no color).

2 Band

Displays the status of each band. You can also switch between dynamic and static.

| Display | Status |
|---|---|
|  | Dynamic state. Indicates that the feedback frequency is detected, and the FBS is functioning. The feedback frequency remains for 15 seconds and is then automatically cleared. Until a new frequency is detected, the feedback frequency display is left blank and turns into a standby state. |
|  | Static state. Click this icon in a dynamic state to lock the band and enter a static state. Click the icon again to cancel a static state of the band and enter a standby state. |
|  | Standby state. Waiting for a new feedback frequency to be detected. |

3 Detection

Select the strength to suppress the feedback.

4 Reset

Click to reset the detected frequencies. Once reset, new frequencies are detected (but those of the bands in a static state are not reset).

5 All Static

Set all bands to the static state.

6 Frequency

Displays the frequencies of the detected feedbacks.

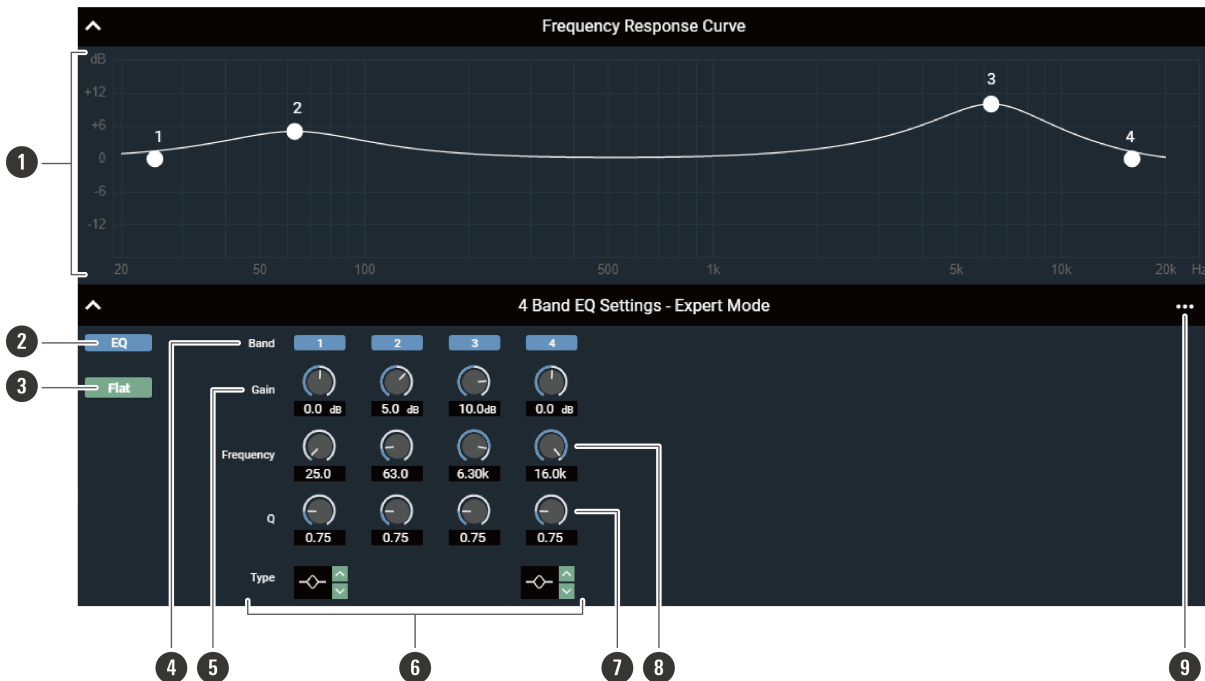
7 Response

Select the speed of suppressing the feedback.

• Switch the settings of "Detection" or "Response" to reset the band frequencies in a dynamic state.

Overview of the parameter editing screen

Setting the 4-band EQ



1 Frequency Response Curve

Display and edit the EQ frequency response waveform. The pointer for each band indicates the frequency and the gain position. Edit the frequency and the gain by dragging a pointer.

2 EQ ON/OFF

Switch the EQ ON (blue)/OFF (no color).

3 Flat

In all bands, change the gain to 0 without changing the current frequency.

4 Band

Display and switch the ON (blue)/OFF (no color) setting of each band.

5 Gain

Adjust the gain of each band.

6 Type

Change the filter type (applicable to bands 1 and 4 only).

7 Q

Adjust the Q value of each band.

8 Frequency

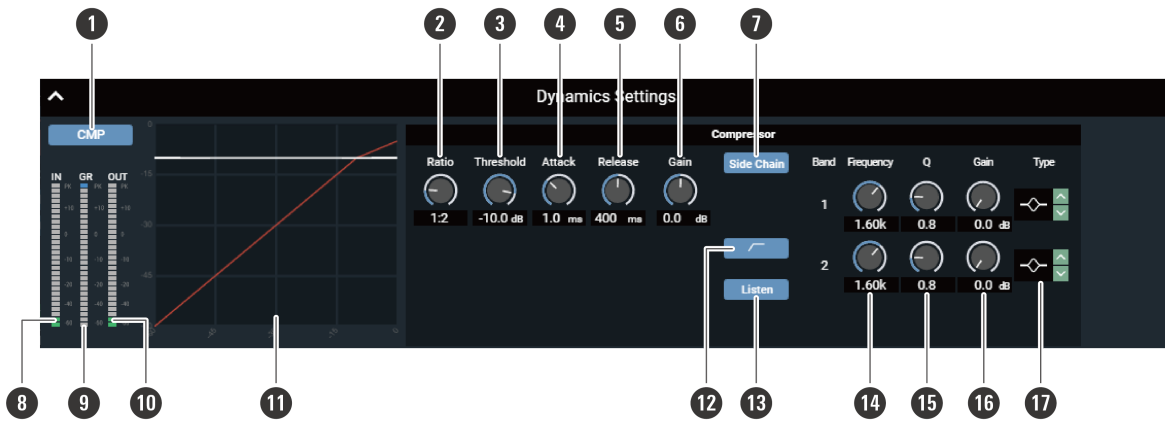
Adjust the frequency of each band.

9 Settings menu

Recall/save an EQ preset, reset the EQ frequency response waveform, or switch between easy and expert screen modes.

Overview of the parameter editing screen

Configuring dynamics function settings



1 **CMP ON/OFF**

Switch the EQ ON (blue)/OFF (no color).

2 **Ratio**

Set the compressor ratio.

3 **Threshold**

Set the compressor threshold.

4 **Attack**

Set the compressor attack time.

5 **Release**

Set the compressor release time.

6 **Gain**

Set the Dynamics output gain.

7 **Side Chain**

Switch between compressor (no color) and DeEsser (blue) modes.

8 **Dynamics IN**

Indicates the level of audio input to Dynamics.

9 **GR (Gain Reduction)**

Indicates the level of audio gain suppression by the compressor.

10 **Dynamics OUT**

Indicates the level of audio output from Dynamics.

11 **Dynamics graph**

Indicates the Dynamics characteristic.

12 **Low-cut ON/OFF**

Turn the low-cut ON/OFF.

13 **Listen**

Turn the Listen function ON/OFF.

Overview of the parameter editing screen

14 Frequency

Adjust the frequency of the DeEsser.

15 Q

Adjust the Q value of the DeEsser.

16 Gain

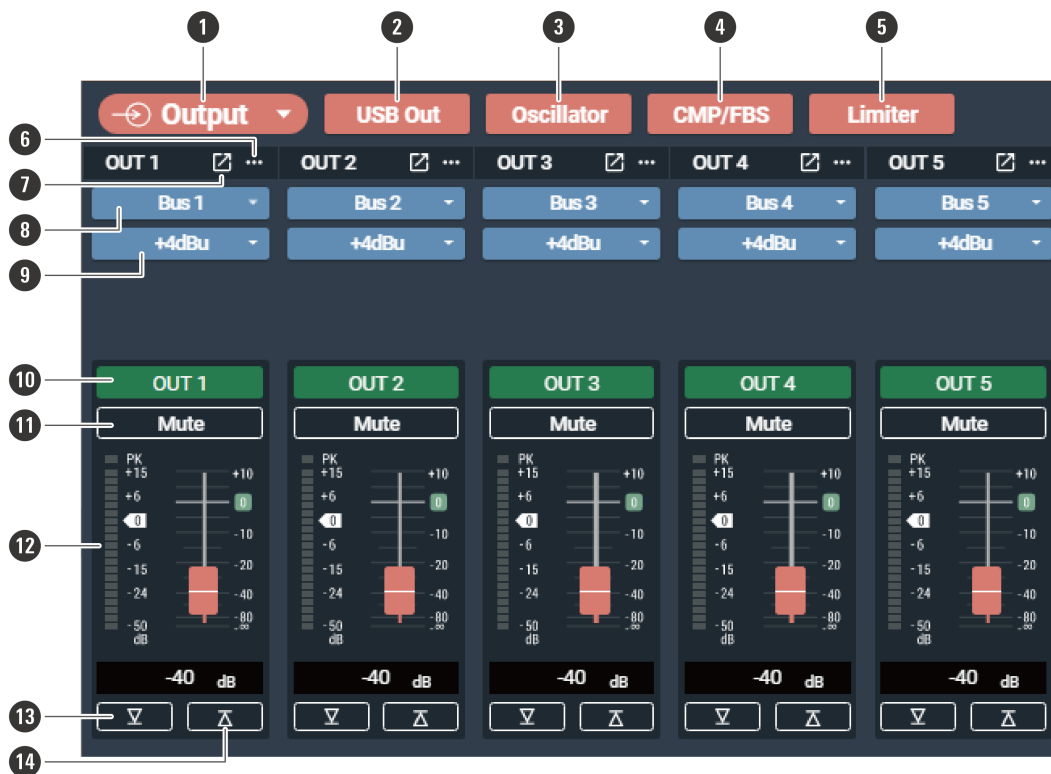
Adjust the gain of the DeEsser.

17 Type

Change the filter type.

Actions possible using the audio output screen (Output)

Set the various options, such as Level, FBS, EQ, and Dynamics, for audio output.



1 Output View Setting

Set the channel to display on the screen.

2 USB Out

Select the USB output bus and set the transmission level.

3 Oscillator

The product includes an oscillator function for output channels. This function is useful for audio checks during construction and maintenance.

Overview of the parameter editing screen

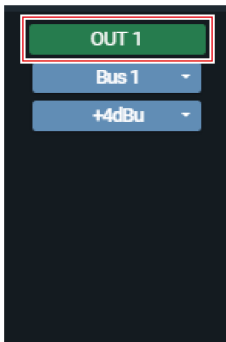
- 4 CMP/FBS**
Display the CMP (compressor)/FBS (feedback suppressor) settings screen.
- 5 Limiter**
Display the advanced Limiter settings screen.
- 6 Channel menu list**
Copy channels, reset settings, and link channels.
- 7 Advanced channel settings**
Display advanced channel settings.
- 8 Output switching**
Specify the output.
- 9 Unity level**
Set the unity level.
- 10 Channel name/color**
Set the channel name and color.
- 11 Mute**
Switch the mute setting between ON and OFF.
- 12 Output level adjustment**
Adjust the audio output level.
- 13 Min Volume ON/OFF**
Set the lower limit of the audio output level. The volume position when the setting is turned ON (blue) will be set.
- 14 Max Volume ON/OFF**
Set the upper limit of the audio output level. The volume position when the setting is turned ON (blue) will be set.

Setting channel names and colors

Set names and colors for each channel.

- 1 Click on the channel name.**

Overview of the parameter editing screen



2 Click on the text box and enter a channel name.

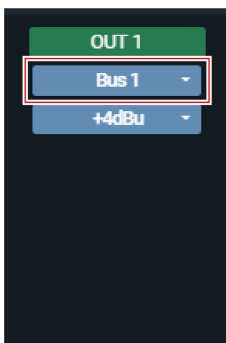
3 Select a color.

4 Click "OK".

» The channel name and color are set.

Setting the output for each channel

1 Click the area in the red box on the screen.

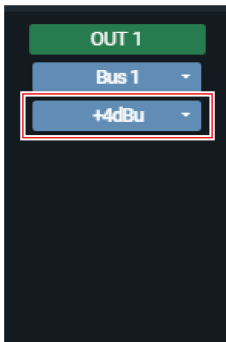


2 Select an output from the pull-down menu.

Setting the unity level

1 Click the area in the red box on the screen.

Overview of the parameter editing screen



2 Select a unity level from the pull-down menu.

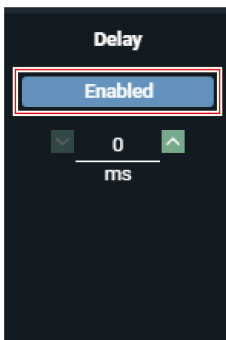
- The unity level changes.

Turning the delay function ON/OFF

Specify whether or not to delay the output of each channel.

1 Click the area in the red box on the screen.

- With each click, the setting switches between ON (blue) and OFF (no color).



2 Set the amount of time to delay.

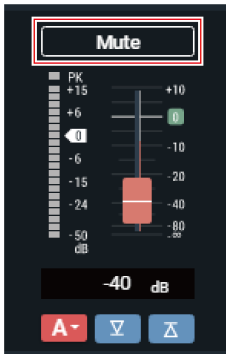
Turning the mute ON/OFF

Switch the mute setting between ON and OFF for each channel.

1 Click the area in the red box on the screen.

Overview of the parameter editing screen

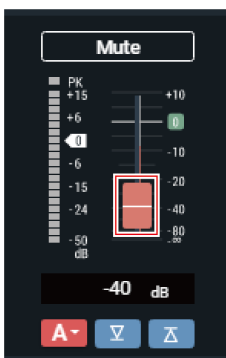
- Mute turns ON (red)/OFF (no color) each time the switch is clicked.






Adjusting the output level

Adjust the audio output level for the channel.

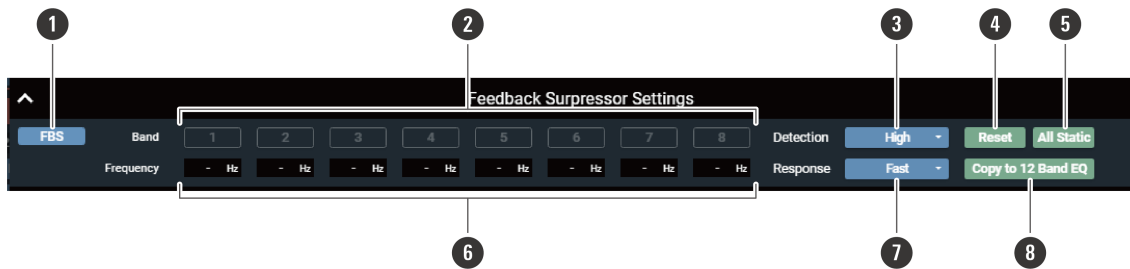
- 1 Drag the volume adjustment dial, and move it up and down to adjust the output level.**



| Display | Status |
|---|---|
|  | If the channel faders are set to the same group on this screen on the primary and extension devices, and the faders are assigned under "Operator Page" > "Fader Settings" on the primary device, the fader assigned for the primary device will be used for controlling the levels of all channels in the same group. |
|  | Set the lower limit of the audio output level. The volume position when the setting is turned ON (blue) will be set. |
|  | Set the upper limit of the audio output level. The volume position when the setting is turned ON (blue) will be set. |

Overview of the parameter editing screen

Setting the FBS (feedback suppressor)






1 FBS ON/OFF

Switch the FBS ON (blue)/OFF (no color).

2 Band

Displays the status of each band. You can also switch between dynamic and static.

| Display | Status |
|---|---|
|  | Dynamic state. Indicates that the feedback frequency is detected, and the FBS is functioning. The feedback frequency remains for 15 seconds and is then automatically cleared. Until a new frequency is detected, the feedback frequency display is left blank and turns into a standby state. |
|  | Static state. Click this icon in a dynamic state to lock the band and enter a static state. Click the icon again to cancel a static state of the band and enter a standby state. |
|  | Standby state. Waiting for a new feedback frequency to be detected. |

3 Detection

Select the strength to suppress the feedback.

4 Reset

Click to reset the detected frequencies. Once reset, new frequencies are detected (but those of the bands in a static state are not reset).

5 All Static

Set all bands to the static state.

6 Frequency

Displays the frequencies of the detected feedbacks.

7 Response

Select the speed of suppressing the feedback.

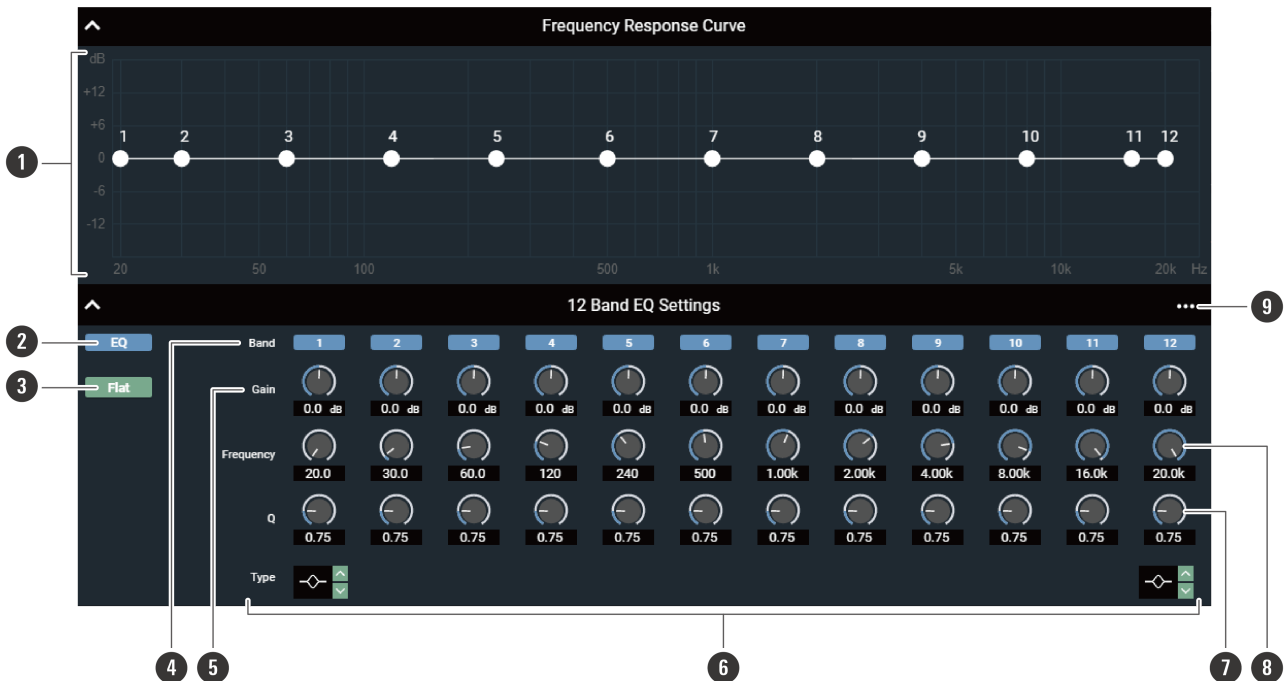
8 Copy to 12 Band EQ

Click to copy the static bands to the bands of 12-band EQ. The bands for which the 12-band EQ is turned off are copied.

• Switch the settings of "Detection" or "Response" to reset the band frequencies in a dynamic state.

Overview of the parameter editing screen

Setting the 12-band EQ



1 Frequency Response Curve

Display and edit the EQ frequency response waveform. The pointer for each band indicates the frequency and the gain position. Edit the frequency and the gain by dragging a pointer.

2 EQ ON/OFF

Switch the EQ ON (blue)/OFF (no color).

3 Flat

In all bands, change the gain to 0 without changing the current frequency.

4 Band

Display and switch the ON (blue)/OFF (no color) setting of each band.

5 Gain

Adjust the gain of each band.

6 Type

Change the filter type (applicable to bands 1 and 12 only).

7 Q

Adjust the Q value of each band.

8 Frequency

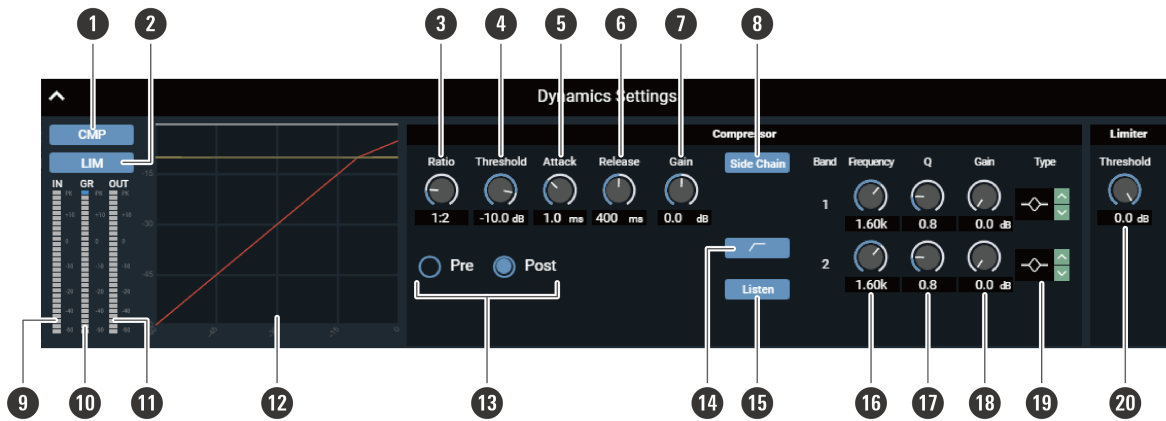
Adjust the frequency of each band.

9 Settings menu

Reset a parameter and save/recall an EQ preset.

Overview of the parameter editing screen

Configuring dynamics function settings



1 CMP ON/OFF

Switch the EQ ON (blue)/OFF (no color).

2 LIM

Switch the Limiter ON (blue)/OFF (no color).

3 Ratio

Set the compressor ratio.

4 Threshold

Set the compressor threshold.

5 Attack

Set the compressor attack time.

6 Release

Set the compressor release time.

7 Gain

Set the Dynamics output gain.

8 Side Chain

Switch between compressor (no color) and DeEsser (blue) modes.

9 Dynamics IN

Indicates the level of audio input to Dynamics.

10 GR (Gain Reduction)

Indicates the level of audio gain suppression by the compressor.

11 Dynamics OUT

Indicates the level of audio output from Dynamics.

12 Dynamics graph

Indicates the Dynamics characteristic.

13 Pre/Post

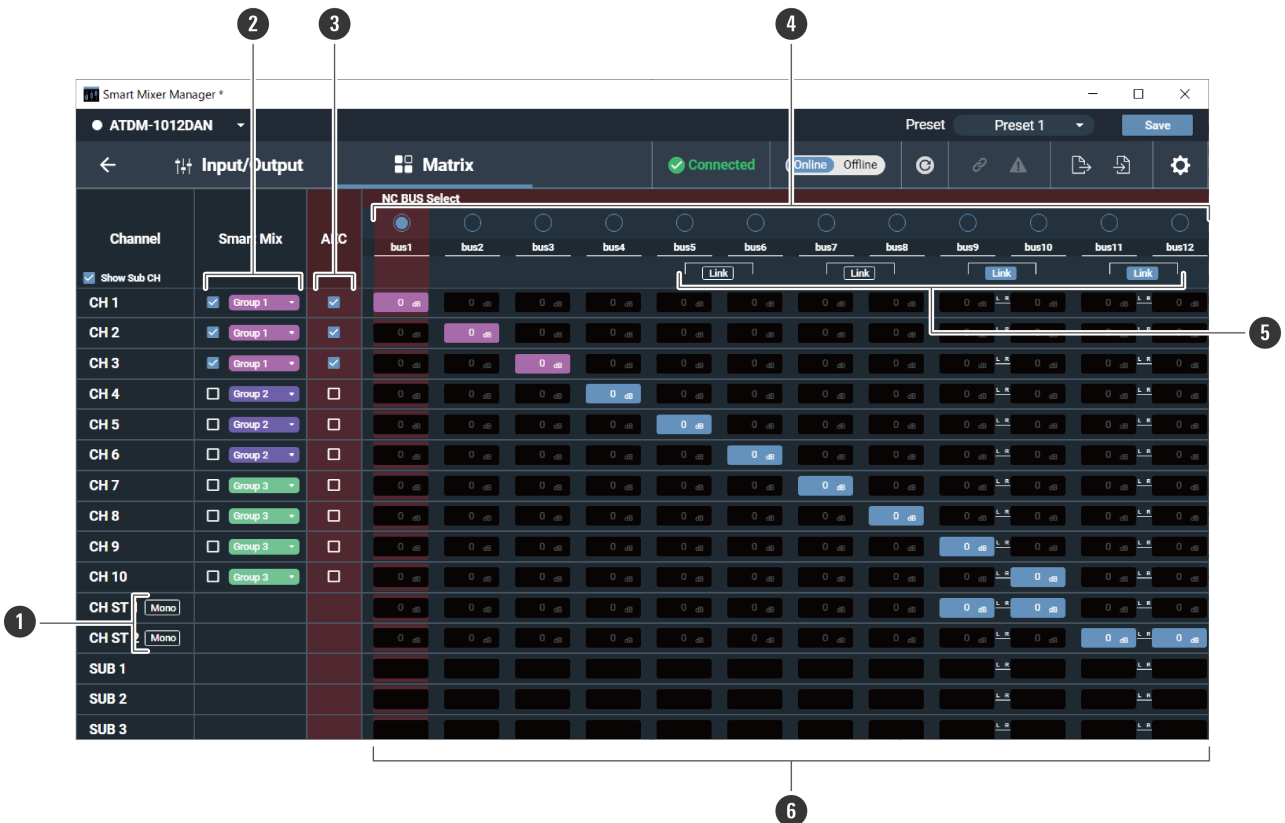
Select whether to assign Dynamics to Pre EQ or Post EQ.

Overview of the parameter editing screen

- 14 **Low-cut ON/OFF**
Turn the low-cut ON/OFF.
- 15 **Listen**
Turn the Listen function ON/OFF.
- 16 **Frequency**
Adjust the frequency of the DeEsser.
- 17 **Q**
Adjust the Q value of the DeEsser.
- 18 **Gain**
Adjust the gain of the DeEsser.
- 19 **Type**
Change the filter type.
- 20 **Threshold (Limiter)**
Set the Limiter threshold.

Actions possible using the matrix assignment settings screen (Matrix)

Set which input channels should be sent to which bus or which input channels should be pulled in for a specific bus.



Overview of the parameter editing screen

1 Mono

Set the channel to display on the screen.

2 Smart Mix

Turn Smart Mix ON/OFF for each channel.

3 AEC

Turn the AEC ON/OFF for each channel.

4 NC BUS Select

Select the NC bus.

5 Link

Turn the bus ST LINK ON/OFF.

6 Bus assignment setting area

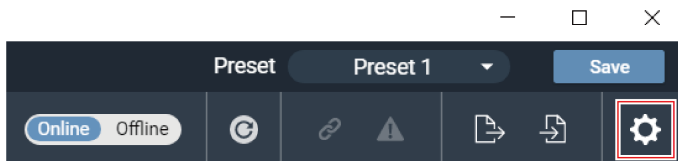
Set which bus each channel should be assigned to.

Setting the system details (Settings & Maintenance)

Advanced options for the entire system and access utilities to help maintain and troubleshoot the system are available.

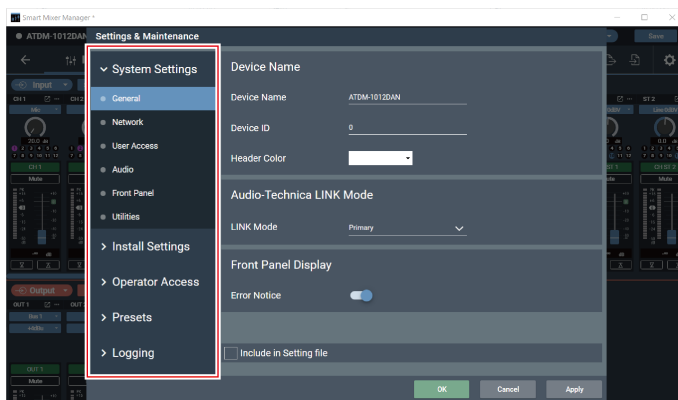
Basic operations on Settings & Maintenance screen

- 1 Click the area in the red box.



» The Settings & Maintenance screen appears.

- 2 Open the settings menu and click on a setting.



- 3 Set the item as necessary, and click "Apply".

- 4 Click "OK" to exit.

General (System Settings)

Device Name

| Item | Description |
|--------------|---|
| Device Name | Set the name of the mixer. |
| Device ID | Set the equipment ID for the mixer. |
| Header Color | Set the color of the top part (header) of the screen. |

Setting the system details (Settings & Maintenance)

Audio-Technica LINK Mode

| Item | Description |
|-----------|---|
| Link Mode | Set the operation mode under Audio-Technica LINK. |

Front Panel Display

| Item | Description |
|--------------|---|
| Error Notice | Set whether to display error messages on the mixer's display. |



- Selecting "Include in Setting file" will reflect the "General" settings to the mixer when setting files are imported.

Network (System Settings)

Network Configuration (ATDM-1012DAN only)

| Item | Description |
|---------|--|
| Mode | Set the network configuration mode that best suits your environment. |
| Latency | Set latency for the Dante port. |

Dante & Audio Port Settings (ATDM-1012DAN only)

Set how to obtain IP addresses, and specify each value.

| Item | Description |
|--------------------------------|--|
| IP Config Mode | Set the configuration mode for the IP address. When "Auto" is selected, IP addresses are automatically assigned by DHCP servers, etc. When "Static" is selected, static IP addresses are used. |
| IP Address ^[1] | Set the IP address. |
| Subnet Mask ^[1] | Set the subnet mask. |
| Gateway Address ^[1] | Set the gateway address. |

[1] This is possible when "IP Config Mode" is set to "Static".

Setting the system details (Settings & Maintenance)

IP Control & Web Remote Port Settings

Set how to obtain IP addresses, and specify each value.

| Item | Description |
|--------------------------------|--|
| IP Config Mode | Set the configuration mode for the IP address. When "Auto" is selected, IP addresses are automatically assigned by DHCP servers, etc. When "Static" is selected, static IP addresses are used. |
| IP Address ^[1] | Set the IP address. |
| Subnet Mask ^[1] | Set the subnet mask. |
| Gateway Address ^[1] | Set the gateway address. |

[1] This is possible when "IP Config Mode" is set to "Static".

Allow Discovery

| Item | Description |
|---------|---|
| Enabled | Set the product to be discovered automatically by "Locate". When the function is turned ON (blue), the mixer can be identified by "Locate". |

IP Control Settings

| Item | Description |
|---|--|
| Port Number | Show the IP control port number. |
| Notification | Receive notifications from IP-controlled mixers. |
| Audio Level Notification ^[1] | Receive audio level notifications from IP-controlled mixers. |
| Multicast Address ^[1] | Set the address for multicast. |
| Multicast Port Number ^[1] | Set the port number for multicast. |

[1] This is possible when "Notification" is set to "ON".

Setting the system details (Settings & Maintenance)

NTP Settings

| Item | Description |
|----------------------|--|
| Enabled | Set whether to enable or disable the NTP (Network Time Protocol). |
| Server Address | Set the NTP server address. |
| Port Number | Set the NTP port number. |
| Time Zone | Set the time difference from the UTC (Coordinated Universal Time). |
| Daylight Saving Time | Turn on/off the daylight saving time. |
| Start Date & Time | Set the starting date/time of daylight saving time. |
| End Date & Time | Set the ending date/time of daylight saving time. |



- Selecting “Include in Setting file” will reflect the “Network” settings to the mixer when setting files are imported.

User Access (System Settings)

Default Front Panel Mode

| Item | Description |
|--------------------------|--|
| Default Front Panel Mode | Set the front panel mode when the power is on. |

Login Password

| Item | Description |
|------------------------|---|
| Administrator Password | Set whether or not to require a password for Administrator login. |

Operator Page Permissions

| Item | Description |
|-----------------|---|
| Restrict Access | Set whether or not to limit the devices that can be accessed by the Operator. |

Audio (System Settings)

Audio System

Check/change the audio-related system settings.

| Item | Description |
|----------------------|--|
| Gain Unit Type | Set the unit in which the gain is displayed for adjustment. |
| Delay Unit Type | Set the unit in which the delay time is displayed for setting. |
| Input EQ/DYN Display | Set the graph display for the audio input settings screen. |
| Virtual Mic Mode | Select to include the virtual mic as an option in the input type pull-down menu. |

Front Panel (System Settings)

Levels

| Item | Description |
|----------------|---|
| Input Enabled | Set whether or not to enable adjustment of the input level for each channel on the front panel of the mixer. |
| Output Enabled | Set whether or not to enable adjustment of the output level for each channel on the front panel of the mixer. |

Mutes

| Item | Description |
|----------------|--|
| Input Enabled | Set whether or not to enable the mute setting for each input channel on the front panel of the mixer. |
| Output Enabled | Set whether or not to enable the mute setting for each output channel on the front panel of the mixer. |

LED Dimmer

| Item | Description |
|---------|---|
| Enabled | Set whether or not to enable dimming of the LEDs (dimmed illumination) on the front panel of the mixer. |

Setting the system details (Settings & Maintenance)

Front Panel Restrictions

| Item | Description |
|-----------------------|---|
| Enabled Preset Recall | Set whether or not to enable preset recall on the front panel of the mixer. |

Utilities (System Settings)

Firmware Update

Updates the mixer firmware.

- 1** Check "Serial Number", "Device Name", and "Firmware Version" on the screen to see if the mixer is due for update.
- 2** Click "Browse".
» The file selection screen appears.
- 3** Select and open the file of the latest version on the file selection screen.
- 4** Click "Update".
» Update is started. When the update is complete, the completion screen appears.
- 5** Turn off the mixer and then restart it.

Language Pack Install

Install the language pack to allow Web Remote to be displayed in multiple languages.

- 1** Click "Browse".
» The file selection screen appears.
- 2** Select and open the files of the desired languages on the file selection screen.
- 3** Click "Install".

Setting the system details (Settings & Maintenance)

» Installation is started. When installation is complete, the completion screen appears.

Reset All Settings to Default

The mixer will be reset to factory default.

- However, the firmware version will remain the same.

1 Click "Reset".

- The confirmation screen appears.

2 Check the confirmation screen and click "OK".

- When the initialization is complete, the completion screen appears. Turn off the mixer.

Control Panel (Install Settings)

Control Panel

Use this item to configure settings when using a separately sold control panel. Refer to the user manual of the control panel for detailed information on using the product.

Operator Page (Operator Access)

Multi Operator Page

| Item | Description |
|---------|---|
| Enabled | Specify whether to use multiple Operator pages. |

Array Mic Switch LINK

| Item | Description |
|---------|--|
| Enabled | Specify whether to share the mute function of an array mic switch between Audio-Technica LINK devices. |

Setting the system details (Settings & Maintenance)

Fader Settings

Check/change the operations that can be performed on the Operator page.

- 1 Enter the page name to be displayed in “Page Name”.**
- 2 Set whether to select the check box in “Hide from List”.**
 - If the check box is selected, fader will be displayed only when accessing from an authorized IP address.
- 3 Set each item.**
- 4 Click “Apply”.**
» Setting is complete.

Operator Page Restrictions

Set restrictions on the operations that can be performed on the Operator page.

| Item | Description |
|----------------------------------|--|
| Preset Recall | Set whether or not to recall presets. |
| Number of Presets ^[1] | Set the number of presets that can be recalled. |
| Resume Fader Position | Set whether or not to enable position resume for up to eight fader channels. |
| Logout Button | Set whether or not to display the Log Out button on the screen. |
| Array Mic Switch ^[2] | Specify whether to include a button for turning the array mic ON/OFF. |
| Tascam Button | Specify whether to display the recording operation button on the screen. |
| Transport Layout | Switch the placement of the recording operation button. |

[1] This is possible when “Preset Recall” is set to “ON”.

[2] This is possible when “Virtual Mic Mode” is set to “Virtual Mic”.

Presets (Presets)

Presets

Check/change the preset settings currently registered in the mixer, and import/export preset files.

Setting the system details (Settings & Maintenance)

Preset Recall LINK

| Item | Description |
|--------------------|--|
| Preset Recall LINK | Specify whether to link preset recalling between Audio-Technica LINK devices. |
| Tascam Preset LINK | Specify whether to recall presets on the SS-R250N TASCAM solid-state recorder when recalling presets 1 to 3. |

Partial Presets

Unlike presets that are saved with all device settings, partial presets are saved only with specifically selected parameters. This makes it possible to recall settings without affecting parameters other than those saved.

4 Band EQ Library

You can import/export 4-band EQ patterns to be applied to audio inputs as a preset.

| Item | Description |
|-----------|---|
| EQ Preset | A setting in which the EQ patterns for all bands are saved. |
| Library | A group that includes all presets. |

12 Band EQ Library

You can import/export 12-band EQ patterns to be applied to audio inputs as a preset.

| Item | Description |
|-----------|---|
| EQ Preset | A setting in which the EQ patterns for all bands are saved. |
| Library | A group that includes all presets. |

Logging (Logging)

Logging

Perform settings for log messages and download log files.

Setting the system details (Settings & Maintenance)

| Item | Description |
|--------------|---|
| Enabled | Set whether to save log messages. Setting to "ON" (blue) will save log messages. |
| Destinations | Set whether to write log messages to the internal memory or transfer them to the Syslog server. |
| Log File | You can download the log file recorded to the internal memory by clicking "Download". |



- Syslog is a standard for transferring log messages across IP networks. It is used for administration of computer systems and security monitoring.

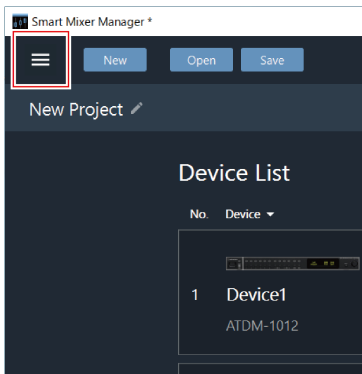
System Info (System Info)

System Info

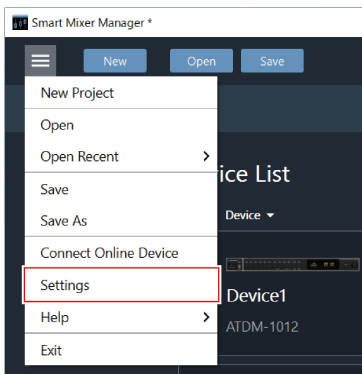
System information, such as the various network settings and the mixer's serial number and firmware version, is displayed. System information can be exported to a text file by clicking "Export".

Software application settings

1 Click the main menu.



2 Click "Settings".



» The Settings screen appears.

3 When setting is complete, click "OK" to exit.

Auto Reconnect

| Item | Description |
|----------------|---|
| Enabled | Automatically reconnects when a project file is opened if a previously connected mixer is found on the same network. Setting to "ON" (blue) will enable this function. |
| Data Direction | If set to "App -> Device", software application settings data is reflected to the mixer. If set to "Device -> App", mixer settings data is recalled by the software application. |

Page Settings

| Item | Description |
|-----------------------|---|
| Show top Menu Enabled | Set whether to display the top menu screen when the software application launches. Setting to "ON" (blue) will display the top menu screen. |

Error message list

| Error message | Description |
|---|---|
| Data format is invalid | The file you are trying to import is not a supported file format. Import a file of a supported file format. |
| The following parameter value is invalid | The file you are trying to import contains invalid data. Import another file. |
| One or more devices are unable to connect with Smart Mixer Manager. | The mixer cannot be connected to Smart Mixer Manager. Check the connection of the mixer. |

Trademarks

- Microsoft[®] and Windows[®] are registered trademarks of Microsoft Corporation in the United States and/or other countries.
- Microsoft Windows operating system is indicated in its abbreviated form as Windows.
- All other company and product names that appear in this document are trademarks or registered trademarks of their respective owners.

株式会社オーディオテクニカ

〒194-8666 東京都町田市西成瀬2-46-1
www.audio-technica.co.jp

Audio-Technica Corporation

2-46-1 Nishi-naruse, Machida, Tokyo 194-8666, Japan
www.audio-technica.com
©2022 Audio-Technica Corporation
Global Support Contact: www.at-globalsupport.com